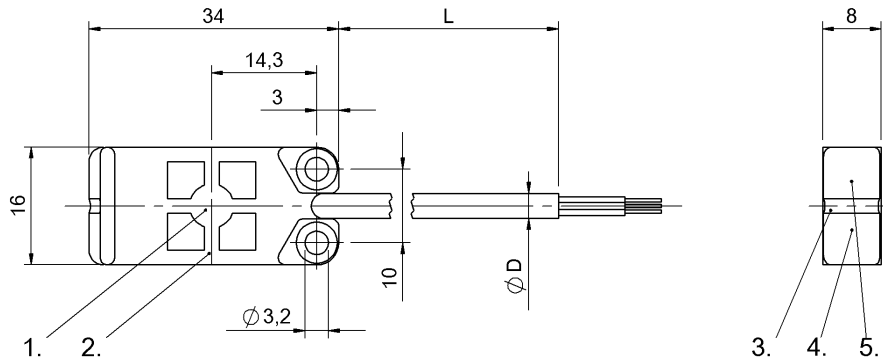


SK1-8-34/16/8-P-b-O-T



1) Sensing surface 2) Housing 3) Cover 4) Power indicator green 5) Function indicator yellow

Display/Operation

Function indicator	yes
Power indicator	yes
Setting	teachable

Electrical connection

Cable diameter D	3.40 mm
Cable length	2 m
Conductor cross-section	0.14 mm ²
Connection type	Cable, 2.00 m, PUR
Number of conductors Protection	4
against device mix-ups Short-circuit protection	yes
	yes

Electrical data

Load capacitance max. at U _e	0.33 µF
No-load current I _o max. at U _e	12.0 mA
Operating voltage U _b	12...30 VDC
Polarity reversal protected	yes
Rated insulation voltage U _i	75 V DC
Rated operating current I _e	50 mA
Rated operating voltage U _e DC	24 V
Ready delay t _v max.	200 ms
Repeat accuracy max. (% of S _r)	5.0 %
Residual current I _r max.	10 µA
Residual ripple max. (% of U _e)	10 %
Switching frequency Utilization category	50 Hz DC-13
Voltage drop static max.	1.5 V

Environmental conditions

Ambient temperature IP	-25...70 °C
rating per IEC 60529	IP67
Storage temperature	-25...85 °C

Functional safety

MTTF (40 °C)	98 a
--------------	------

General data

Approval/Conformity	UL Listed CE
Basic standard	IEC 60947-5-2
Scope of delivery	Holder
Sensitivity	Switching distance teachable

Material

Housing material	PP
Material jacket Material	PUR
sensing surface	PP

Mechanical data

Dimension	34 x 16 x 8 mm
Installation	flush
Tightening torque	0.2 Nm

SK1-8-34/16/8-P-b-O

Output/Interface

Switching output PNP Normally closed (NC)

Range/Distance

Effective operating distance S_r 8 mm
Hysteresis H max. (% of S_r) 15.0 %
Measuring range 1...8 mm
Temperature drift max. (% of S_r) 20 % [-5...55 °C]

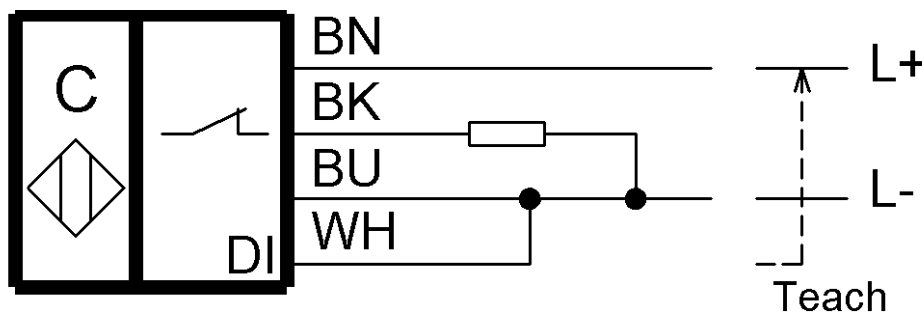
Remarks

For full calibration connect input DI to L+ for 2...7 seconds.
For empty calibration connect to L+ for 7...12 seconds.

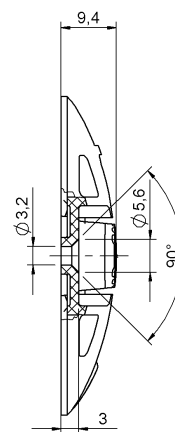
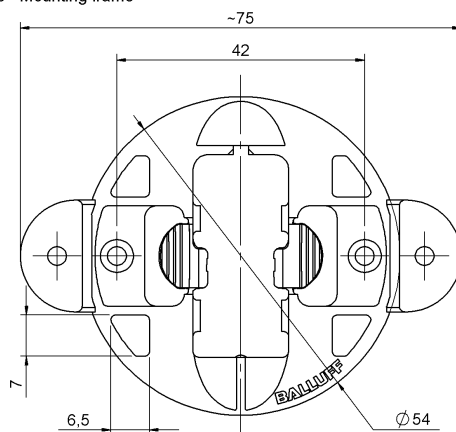
Input DI can be used for teaching the switching point. In normal operation input DI should be connected continuously to L-.

Specification of the MTTF value and the B10d value do not represent any binding quality and/or life expectancy guarantees.

Wiring Diagram



Zubehör - Halter Accessories - Mounting frame



Werkstoff Halter: PP
Material mounting frame: PP